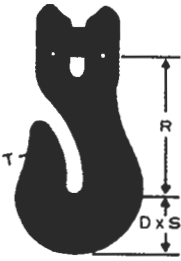


KUPLEX Grab Hook KG

The narrow throat is intended to engage one link of chain. The preferred use is in lashing chain and similar assemblies. It is not suitable for slinging applications and should never be used for shortening sling legs.



| Type/Size Reference | WLL t | Dimensions mm | | | | | Weight kg |
|---------------------|-------|---------------|----|----|----|-------|-----------|
| | | R | D | S | T | | |
| KG7N | 1.5 | 51 | 22 | 14 | 9 | 0.23 | |
| KG10N | 3.15 | 79 | 31 | 17 | 12 | 0.69 | |
| KG13N | 5.3 | 102 | 41 | 22 | 16 | 1.54 | |
| KG16N | 8 | 124 | 50 | 27 | 20 | 2.71 | |
| KG19 | 11.2 | 152 | 64 | 44 | 24 | 5.04 | |
| KG23 | 16 | 178 | 75 | 51 | 29 | 10.71 | |

KUPLEX Turnbuckle KTB

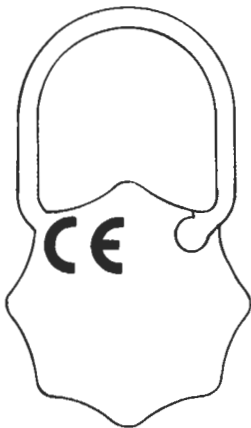
For chain tensioning in load lashings and anchorages



| Type/Size Reference | WLL t | Dimensions mm | | | Weight kg |
|---------------------|-------|---------------|-------|--|-----------|
| | | R Min | T Max | | |
| KTB10 | 3.15 | 375 | 611 | | 2.36 |
| KTB13 | 5.3 | 400 | 616 | | 3.63 |

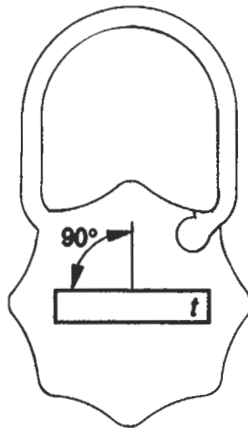
Sling Tags

One size tag to cover all KUPLEX slings from 7mm to 32mm



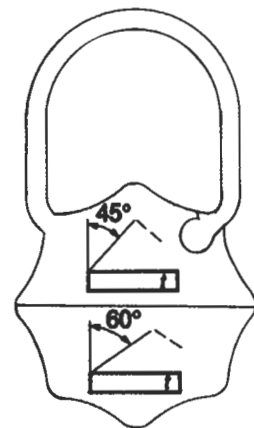
KTP Tag

Blank on the reverse for slings for special purposes and on the reverse of KTS & KTP tags



KTS Tag

For single-leg slings for general service



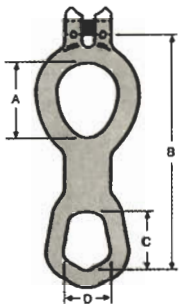
KTP tag

For multi-leg slings for general service

Skip Lifting Components

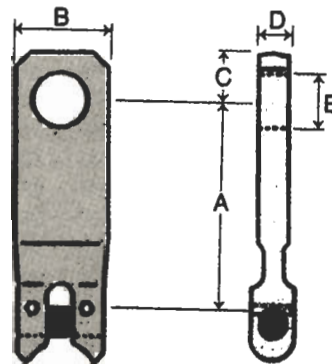
All skip lifting components are designed to accommodate 13mm Kuplex Grade *short link alloy chain and are supplied in zinc plated finish. All items are tested and certified in excess of the requirements of EN 818-2 and EN 1677.

Duplex Keep Plate C2247

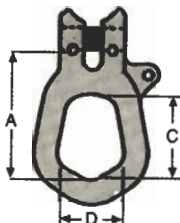


| WLL t | Dimensions mm | | | | Weight kg |
|-------|---------------|-----|----|----|-----------|
| | A | B | C | D | |
| 5.3 | 95x76 | 301 | 74 | 58 | 3.48 |

Top Suspension Plates C1514



Single Trunnion Plate C1513



| WLL t | Dimensions mm | | | Weight kg |
|-------|---------------|----|----|-----------|
| | B | C | D | |
| 5.3 | 112 | 74 | 58 | 1.5 |

| Reference | WLL t | Dimensions mm | | | | | Weight kg |
|-----------|-------|---------------|----|----|----|----|-----------|
| | | A | B | C | D | E | |
| C151401 | 5.3 | 153 | 62 | 32 | 20 | 36 | 1.69 |
| C151402 | 5.3 | 140 | | | | | 1.52 |
| C151403 | 5.3 | 127 | | | | | 1.4 |
| C151404 | 5.3 | 114 | | | | | 1.35 |
| C151405 | 5.3 | 101 | | | | | 1.17 |
| C151406 | 5.3 | 88 | | | | | 1.03 |

