

TRAVSAFE is a patented lifeline system for personal protection against falls when working at heights of 3 m or more. A TRAVSAFE installation comprises 2 wire ropes, along which a travelling anchor (traveller) slides. The wire ropes are held in position by brackets spaced at appropriate distances along the structure.

The user anchors the lanyard of his personal fall arrest harness\* to the traveller by the karibiner.

The TRAVSAFE allows horizontal traversing in complete safety over virtually unlimited distance.

### Freedom of movement:

- The traveller moves freely along the ropes and passes effortlessly over the brackets.
- The traveller passes easily around corners.
- The traveller can be removed from the end of the lifeline and used on more than one system.

### Corrosion resistant:

- The traveller is made of stainless steel and is maintenance free.
- Stainless steel wire ropes (or galvanised wire ropes for interior installations).
- High strength aluminium anchorage brackets fixed with steel bolts or clamps.

### Engineering and installation:

The user should always be as close as possible to the lifeline system, to limit the height of fall. It is important to appreciate and understand that in the event of a fall very high dynamic forces build up and may be exerted on the lifeline system. It is therefore, recommended that the lanyard used in



conjunction with the operators safety harness is fitted with a shock absorber. In a vertically mounted lifeline system, the falling load applies a force that is directly transmitted to the anchorage. On a horizontally mounted lifeline system the force may be increased substantially, which depends on the angle to the lifeline.

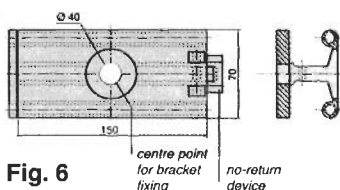
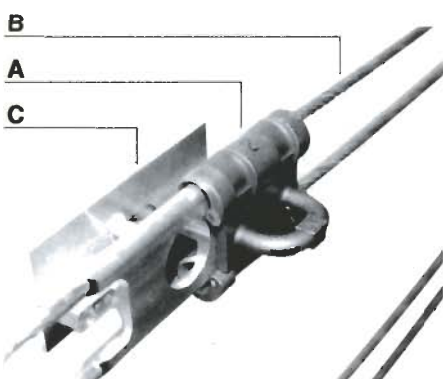


Fig. 6

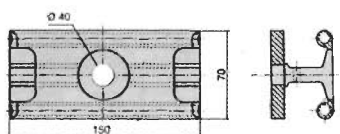


Fig. 7

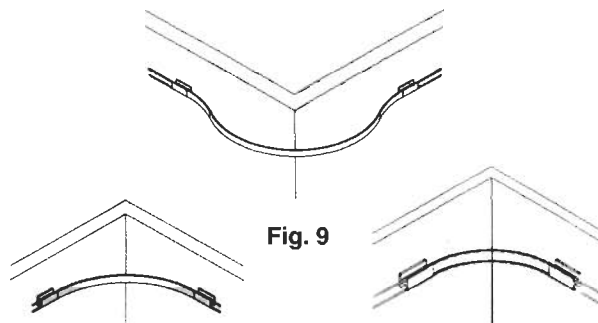


Fig. 9

Fig. 8

Fig. 10

The patented TRAVSAFE system comprises a traveller (A) fitted with an anchoring ring to attach to the lanyard of the safety harness. This traveller traverses on the 2 x 8 mm diameter wire ropes (B), fixed to the structure of the building with anchor brackets (C) spaced regularly along the building.

## 1. BRACKETS

### 1.1 End bracket

The end bracket (Fig. 6) is fitted with a no-return device which allows the traveller to be fitted but which prevents its accidental removal. The user must manually hold the device open to remove the traveller.

### 1.2 Intermediate bracket

The intermediate bracket (Fig. 7) holds the 2 wire ropes in position. They are fixed to the structure every 3 m to 10 m. The traveller passes over the bracket without any additional assistance by the user.

## 1.3 Corner bracket

The corner bracket is mounted at the start and finish of each corner. This bracket holds the corner items in position. As for the intermediate brackets, the traveller passes freely over the brackets.

## 2. CORNERS

### 2.1 Solid profile corner

The rigidity of the solid curved profile (Fig. 8 and 9) allows corners to be traversed by the traveller even if the user is positioned below the TRAVSAFE system (maximum vertical distance: 3 m). The standard curve on a solid profile is 90°.

### 2.2 Spring corner with thread connectors

The flexibility of this spring corner (Fig. 10) requires the user to position himself close to the lifeline to travel around the corner itself. This type of corner may be used for those installations where there is any degree of angle.